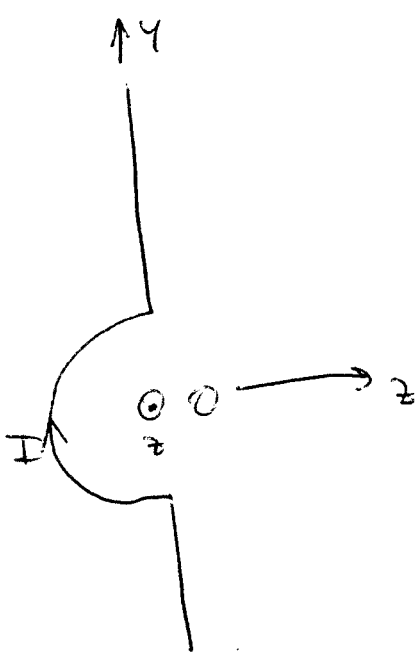
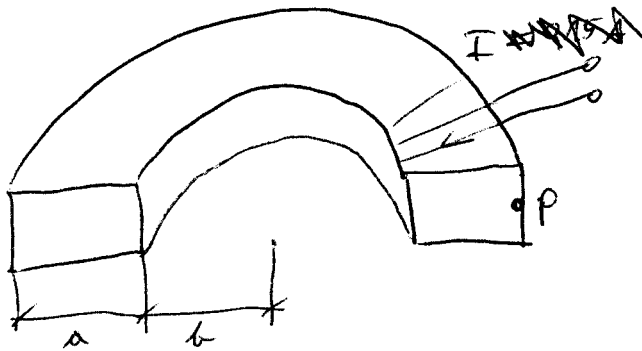


1.)



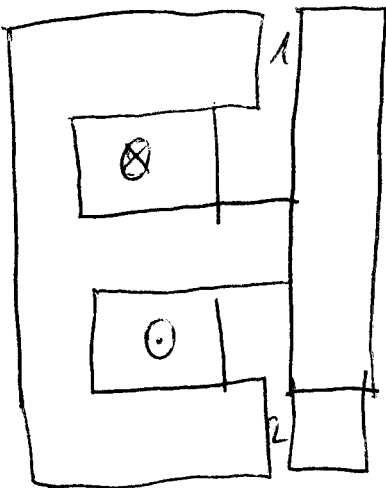
Ges: $\vec{B}(0)$

2.)



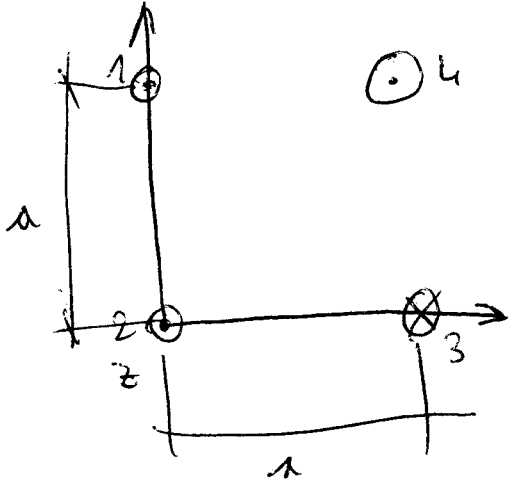
Ges: $\vec{H}(P)$

3.)

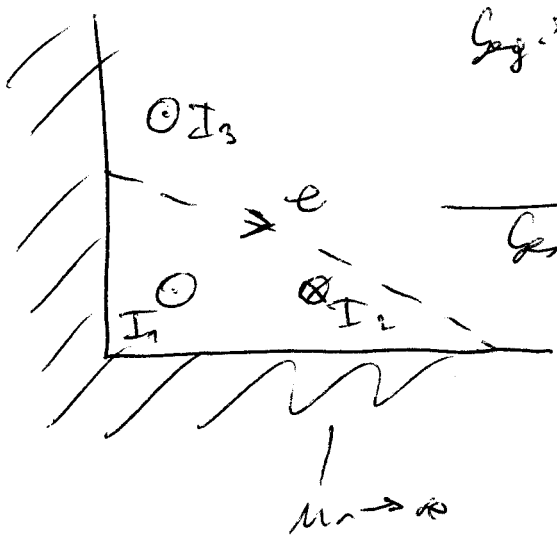


Ges: N, G_{m1}, G_{m2}
 Ges: L

4.)



5.)



$$\begin{aligned}
 G_{\text{ges}}: I_1 &= 200 \text{ A} \\
 I_2 &= 50 \text{ A} \\
 I_3 &= 100 \text{ A} \\
 \hline
 G_{\text{ges}}: V(e)
 \end{aligned}$$